
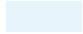
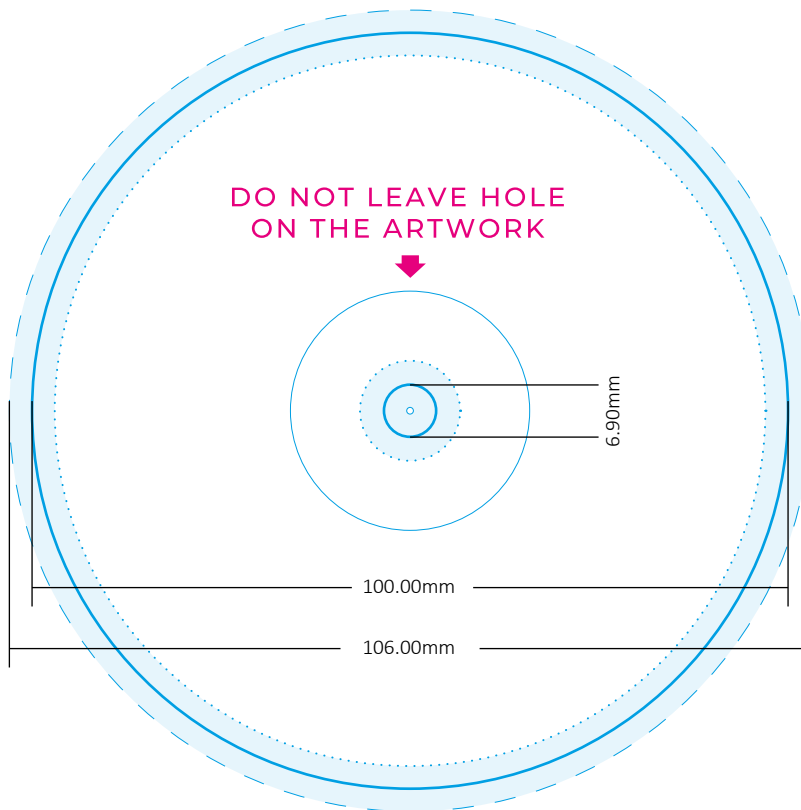


-  **bleed line** Add a min. 3mm bleed past outer edge for any background image or colour.
-  **cut line**
-  **safety line**
-  **clearance area** 3mm from cuts and folds. Keep all text and critical design elements OUT of this area.
-  **fold line**
-  **measurements**

All of the Adobe apps allow users to open PDF documents. Simply right-click your chosen PDF template. On the context menu that opens up, select the "Open With" option. This will open the PDF template in your chosen Adobe app so that you can begin designing your artwork using our template.



Check list!

To prevent errors and ensure a fast turnaround, it is essential that all artwork is prepared correctly. Neglecting to use our templates may result in delays. Before sending your artwork for print, double check the following:

- **Switch off the template layer**, it should not be visible in your final export.
- Ensure that your artwork reaches to the bleed line (3mm outside the cut line).
- Ensure that all important text/logo etc is kept within the safety lines.
- Ensure that your document is set to CMYK (ideally Coated FOGRA39). RGB is not accepted.
- All images must be 300dpi or higher.
- If working in Photoshop all fonts must be rasterized.
- All fonts should be min. 6pts.
- Final artwork should be submitted to us as **print optimized PDF's**.
- **No printers marks** allowed on your final export.

Need help?

Do you want help designing your cover? We can help with everything from small and quick adjustments to more advanced complete graphic layout of your album.

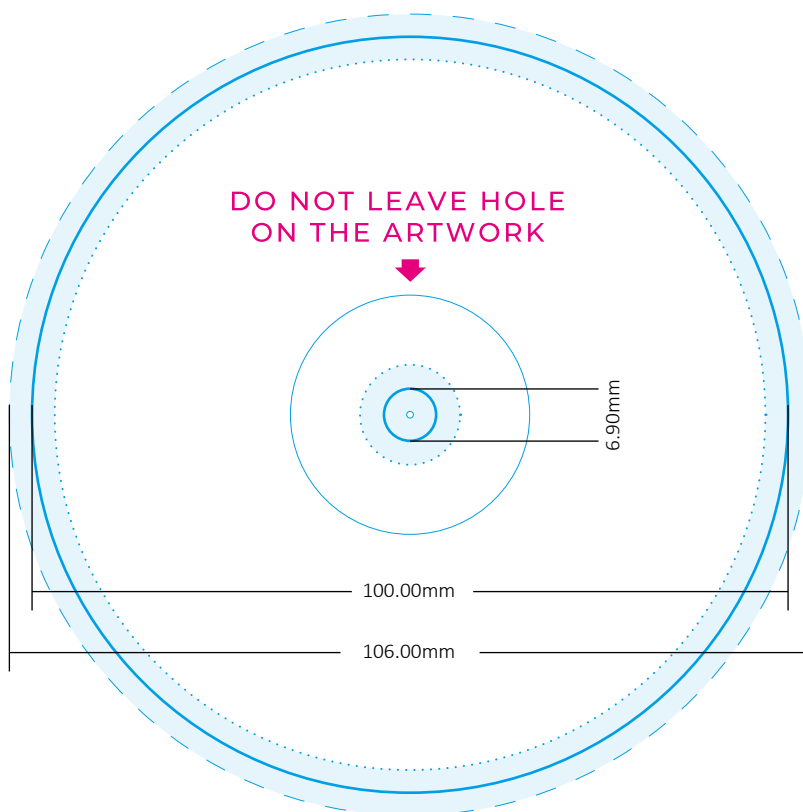
Just go to our webshop to find a solution that fits your needs!

If you have any questions about the templates or how to use them that isn't covered in our [FAQ](#), please contact print@skivtryck.se or print@discrepublic.com.



- - - - **bleed line** Add a min. 3mm bleed past outer edge for any background image or colour.
- **safety line**
- **cut line**
- **fold line**
- clearance area** 3mm from cuts and folds. Keep all text and critical design elements OUT of this area.
- measurements**

All of the Adobe apps allow users to open PDF documents. Simply right-click your chosen PDF template. On the context menu that opens up, select the "Open With" option. This will open the PDF template in your chosen Adobe app so that you can begin designing your artwork using our template.



Check list!

To prevent errors and ensure a fast turnaround, it is essential that all artwork is prepared correctly. Neglecting to use our templates may result in delays. Before sending your artwork for print, double check the following:

- **Switch off the template layer**, it should not be visible in your final export.
- Ensure that your artwork reaches to the bleed line (3mm outside the cut line).
- Ensure that all important text/logo etc is kept within the safety lines.
- Ensure that your document is set to CMYK (ideally Coated FOGRA39). RGB is not accepted.
- All images must be 300dpi or higher.
- If working in Photoshop all fonts must be rasterized.
- All fonts should be min. 6pts.
- Final artwork should be submitted to us as **print optimized PDF's**.
- **No printers marks** allowed on your final export.

Need help?

Do you want help designing your cover? We can help with everything from small and quick adjustments to more advanced complete graphic layout of your album.

Just go to our webshop to find a solution that fits your needs!

If you have any questions about the templates or how to use them that isn't covered in our [FAQ](#), please contact print@skivtryck.se or print@discrepublic.com.



bleed line Add a min. 3mm bleed past outer edge for any background image or colour.

cut line

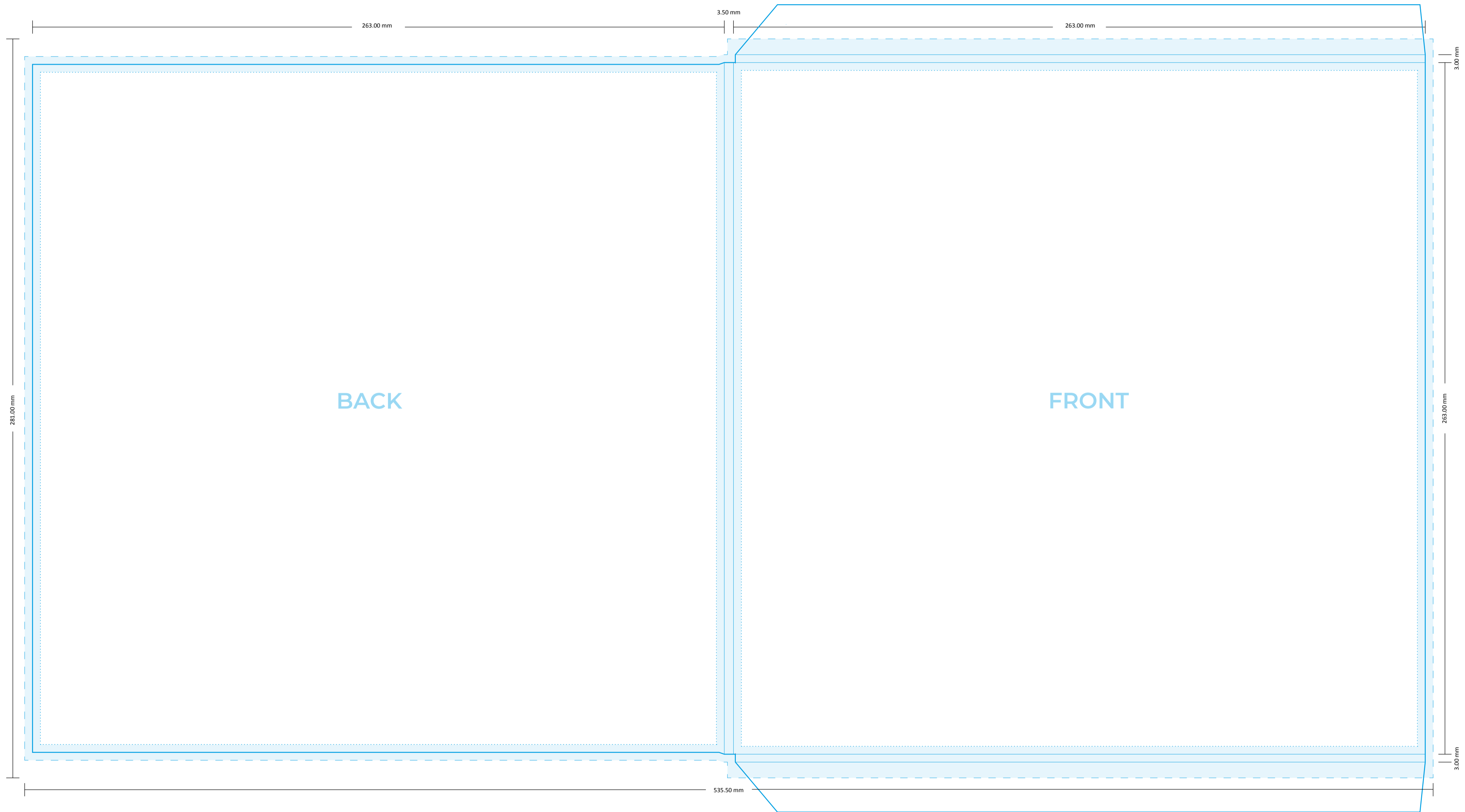
fold line

safety line

clearance area 3mm from cuts and folds. Keep all text and critical design elements OUT of this area.

measurements

All of the Adobe apps allow users to open PDF documents. Simply right-click your chosen PDF template. On the context menu that opens up, select the "Open With" option. This will open the PDF template in your chosen Adobe app so that you can begin designing your artwork using our template.



Check list!

To prevent errors and ensure a fast turnaround, it is essential that all artwork is prepared correctly. Neglecting to use our templates may result in delays. Before sending your artwork for print, double check the following:

- **Switch off the template layer**, it should not be visible in your final export.
- Ensure that your artwork reaches to the bleed line (3mm outside the cut line).
- Ensure that all important text/logo etc is kept within the safety lines.
- Ensure that your document is set to CMYK (ideally Coated FOGRA39). RGB is not accepted.
- All images must be 300dpi or higher.
- If working in Photoshop all fonts must be rasterized.
- All fonts should be min. 6pts.
- Final artwork should be submitted to us as **print optimized PDF's**
- **No printers marks** allowed on your final export.

Need help?

Do you want help designing your cover? We can help with everything from small and quick adjustments to more advanced complete graphic layout of your album.

Just go to our webshop to find a solution that fits your needs!

If you have any questions about the templates or how to use them that isn't covered in our [FAQ](#), please contact print@skivtryck.se or print@discrepublic.com.

bleed line Add a min. 3mm bleed past outer edge for any background image or colour.

cut line

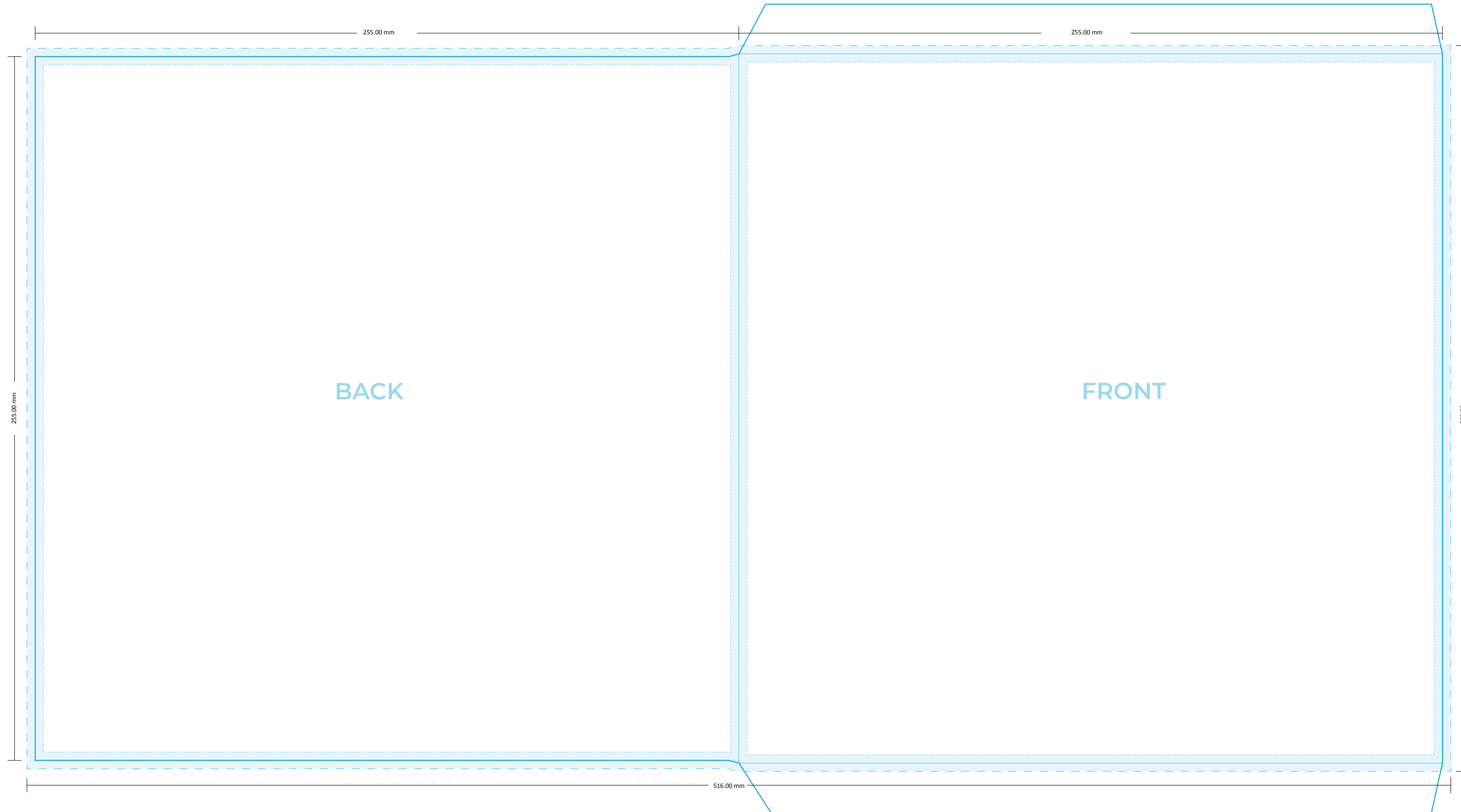
fold line

safety line

clearance area 3mm from cuts and folds. Keep all text and critical design elements OUT of this area.

measurements

All of the Adobe apps allow users to open PDF documents. Simply right-click your chosen PDF template. On the context menu that opens up, select the "Open With" option. This will open the PDF template in your chosen Adobe app so that you can begin designing your artwork using our template.



Check list!

To prevent errors and ensure a fast turnaround, it is essential that all artwork is prepared correctly. Neglecting to use our templates may result in delays. Before sending your artwork for print, double check the following:

- **Switch off the template layer.** it should not be visible in your final export.
- Ensure that your artwork reaches to the bleed line (3mm outside the cut line).
- Ensure that all important text/logo etc is kept within the safety lines.
- Ensure that your document is set to CMYK (ideally Coated FOGRA39). RGB is not accepted.
- All images must be 300dpi or higher.
- If working in Photoshop all fonts must be rasterized.
- All fonts should be min. 6pts.
- Final artwork should be submitted to us as **print optimized PDF's**
- **No printers marks** allowed on your final export.

Need help?

Do you want help designing your cover? We can help with everything from small and quick adjustments to more advanced complete graphic layout of your album.

Just go to our webshop to find a solution that fits your needs!

If you have any questions about the templates or how to use them that isn't covered in our [FAQ](#), please contact print@skivtryck.se or print@discrepublic.com.